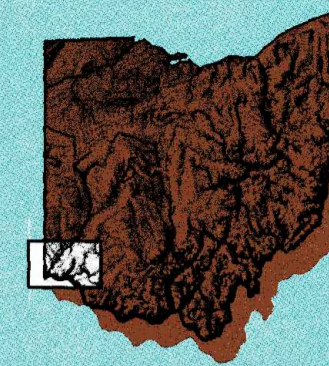


Cincinnati

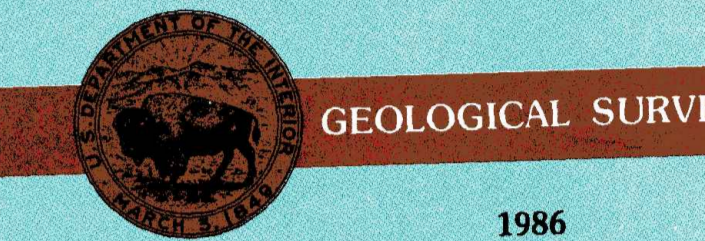
OHIO-INDIANA-KENTUCKY

1:100 000-scale metric
topographic map



30 X 60 MINUTE QUADRANGLE
SHOWING

- Contours and elevations in meters
- Highways, roads and other manmade structures
- Water features
- Woodland areas
- Geographic names



Produced by the United States Geological Survey
Compiled from USGS 1:24 000-scale topographic maps dated 1955-1983. Planimetry revised from aerial photographs taken 1964 and other source data. Revised information not field checked. Map edited 1986.

Projection and 10 000-meter grid, zone 16, Universal Transverse Mercator
25 000-foot grid ticks based on Ohio coordinate system, south zone, Indiana coordinate system, east zone, and Kentucky coordinate system, north zone
1927 North American Datum
To place on the predicted North American Datum 1983, move the projection lines 3 meters south and 6 meters west
There may be private inholdings within the boundaries of the National or State reservations shown on this map

CONTOUR INTERVAL 10 METERS
NATIONAL GEODETIC VERTICAL DATUM OF 1929
ELEVATIONS SHOWN TO THE NEAREST METER

THIS MAP COMPLIES WITH NATIONAL MAP ACCURACY STANDARDS

Meters	Feet	DECLINATION DIAGRAM			ADJOINING MAPS		
1	3.2808				1	2	3
2	6.5616				4	5	
3	9.8424				6	7	8
4	13.1232						
5	16.4040						
6	19.6848						
7	22.9656						
8	26.2464						
9	29.5272						
10	32.8080						
11	36.0888						

FOR SALE BY U.S. GEOLOGICAL SURVEY
DENVER, COLORADO 80225, OR RESTON, VIRGINIA 22092

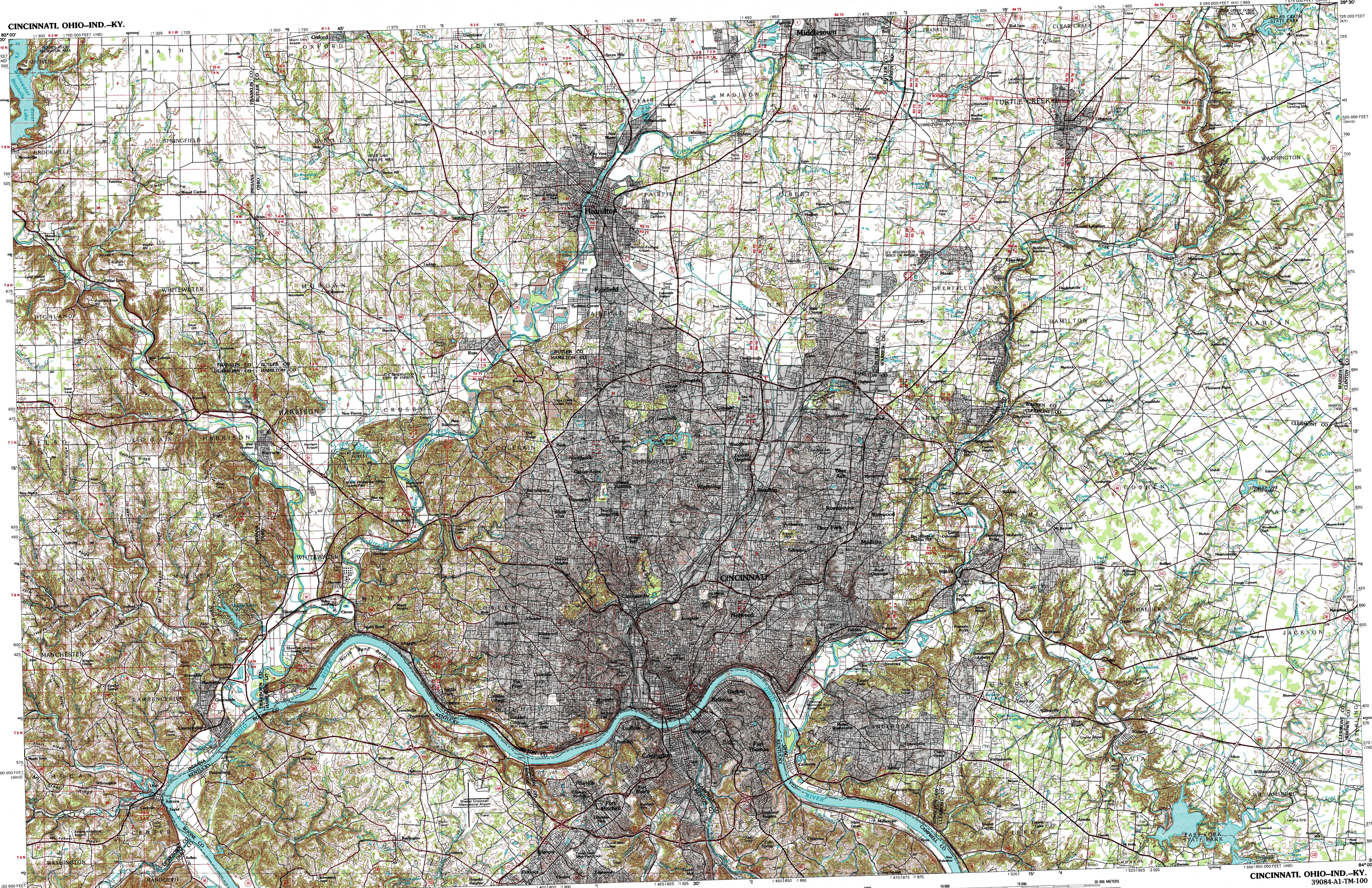
Topographic Map Symbols

- Primary highway, hard surface
- Secondary highway, hard surface
- Light duty road, principal street, hard or improved surface
- Other road or street; trail
- Route marker: Interstate; U.S.; State
- Railroad: standard gage; narrow gage
- Bridge: covered; underpass
- Tunnel: road; railroad
- Built up area, locality: elevation
- Airport; landing field; landing strip
- National boundary
- State boundary
- County boundary
- National or State reservation boundary
- Land grant boundary
- U.S. public lands survey: range, township, section
- Range, township, section line: projected
- Power transmission line: pipeline
- Dam; dam with lock
- Cemetery: building
- Windmill; water well; spring
- Mine shaft; adit or cave; mine; quarry; gravel pit
- Contour: spot; area; U.S. location monument
- Ruins: civil dwelling
- Distorted surface: strip mine; levee; sand
- Contours: index; intermediate; supplementary
- Bathythermic contours: index; intermediate
- Stream: lake; perennial; intermittent
- Rapids, large and small; falls, large and small
- Area to be submerged; marsh; swamp
- Land subject to controlled inundation; woodland
- Scrub; mangrove
- Orchard; vineyard

A pamphlet describing topographic maps is available on request

CINCINNATI, OHIO-IND.-KY.

30 X 60 MINUTE SERIES (TOPOGRAPHIC)



CINCINNATI, OHIO-IND.-KY.
39084-A1-TM-100

1986

SCALE 1:100 000

1 CENTIMETER ON THE MAP REPRESENTS 1 KILOMETER ON THE GROUND

CONTOUR INTERVAL 10 METERS

