

Dayton OHIO-INDIANA

1:100 000-scale metric
topographic map



30 X 60 MINUTE QUADRANGLE
SHOWING

- Contours and elevations in meters
- Highways, roads and other manmade structures
- Water features
- Woodland areas
- Geographic names



GEOLOGICAL SURVEY

1986

Produced by the United States Geological Survey
 Compiled from USGS 1:24 000-scale topographic maps dated 1955-1982. Planimetry revised from aerial photographs taken 1984 and other source data. Revised information not field checked. Map edited 1986.
 Projection and 10 000-meter grid, zone 16, Universal Transverse Mercator
 25 000-foot grid ticks based on Ohio coordinate system, south zone and Indiana coordinate system, east zone 1927 North American Datum
 To place on the projected North American Datum 1983, move the projection lines 2 meters south and 5 meters west
 There may be private inholdings within the boundaries of the National or State reservations shown on this map.

CONTOUR INTERVAL 10 METERS
NATIONAL GEODETIC VERTICAL DATUM OF 1929

THIS MAP COMPLIES WITH NATIONAL MAP ACCURACY STANDARDS

CONVERSION TABLE		DECLINATION DIAGRAM		ADJOINING MAPS		
Meters	Feet	Diagram		1	2	3
1	3.2808			4	5	
2	6.5616			1	2	3
3	9.8424			4	5	
4	13.1232			1	2	3
5	16.4040			4	5	
6	19.6848			1	2	3
7	22.9656			4	5	
8	26.2464			1	2	3
9	29.5272			4	5	
10	32.8080			1	2	3

To convert meters to feet multiply by 3.2808
 To convert feet to meters multiply by 0.3048

UTM grid convergence (GM) and 100 magnetic declination (MD) at center of map. Diagram is approximate.

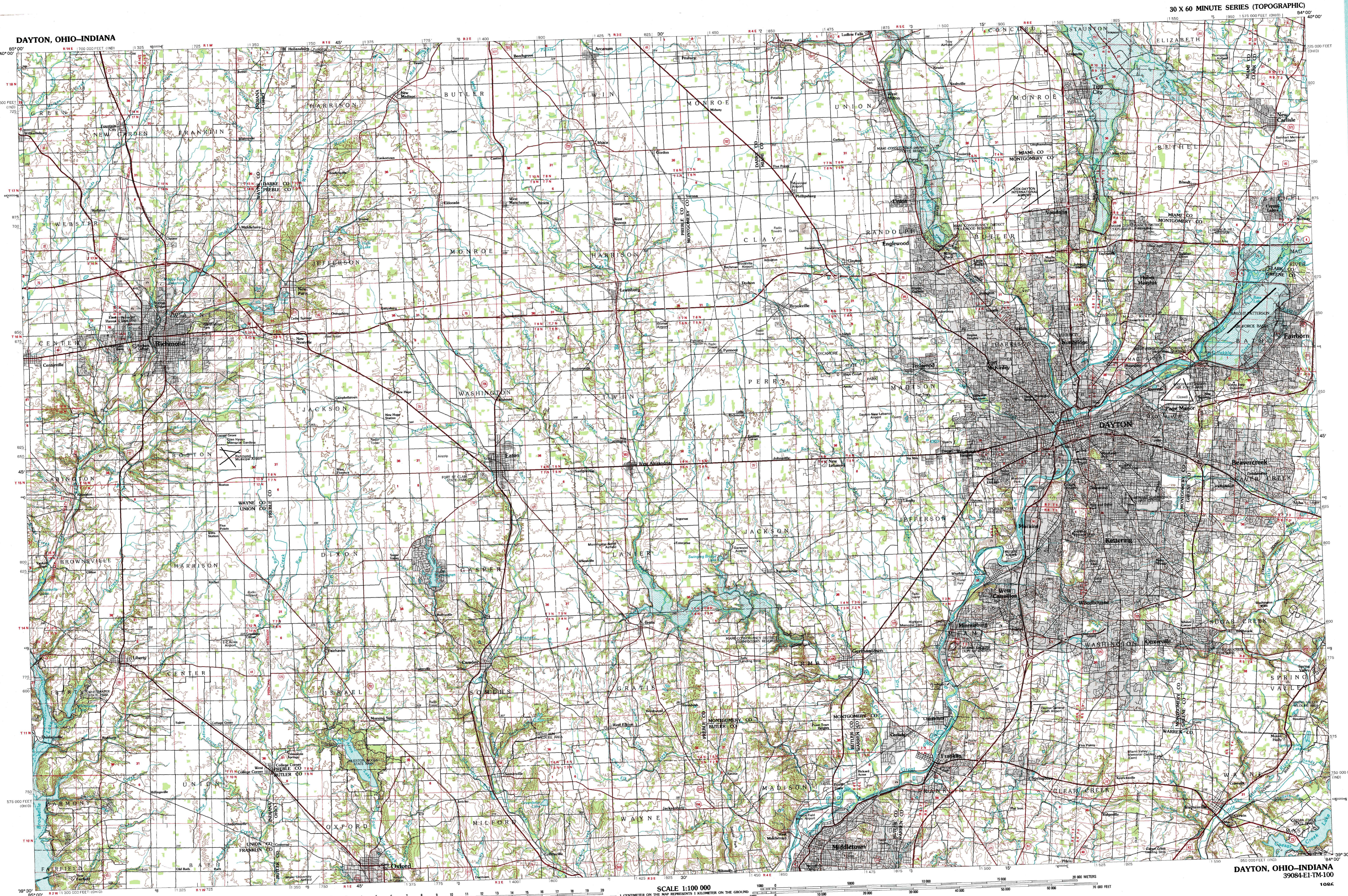
1 Muncie
 2 Piquette
 3 Bellefontaine
 4 New Castle
 5 Springfield
 6 Greensburg
 7 Chestnut
 8 Hillsboro

FOR SALE BY U.S. GEOLOGICAL SURVEY
DENVER, COLORADO 80225, OR RESTON, VIRGINIA 22092

Topographic Map Symbols

- Primary highway, hard surface
- Secondary highway, hard surface
- Light duty road, principal street, hard or improved surface
- Other road or street, trail
- Road marker: Interstate, U.S.; State
- Railroad: standard gage; narrow gage
- Bridge: overpass; underpass
- Tunnel: road, railroad
- Built up area, locality, elevation
- Airport: landing field; landing strip
- National boundary
- State boundary
- County boundary
- National or State reservation boundary
- Land grant boundary
- U.S. public lands survey: range, township; section
- Range, township, section line, ungranted
- Power transmission line, pipeline
- Dam, dam with lock
- Cemetery: building
- Windmill; water well; spring
- Mine shaft; adit; or cave; mine, quarry; gravel pit
- Commemorative marker area; U.S. location monument
- Ruin; cliff dwelling
- Distorted surface: strip mine, level, sand
- Contours: index, intermediate, supplementary
- Bathymetric contours: index, intermediate
- Stream, lake, reservoir; intermittent
- Rapids, large and small; falls, large and small
- Area to be submerged; marsh, swamp
- Land subject to controlled inundation; woodland
- Scrub; mangrove
- Orchard; vineyard

A pamphlet describing topographic maps is available on request



DAYTON, OHIO-INDIANA
 39084-EL-TM-100
 SCALE 1:100 000
 1 CENTIMETER ON THE MAP REPRESENTS 1 KILOMETER ON THE GROUND
 CONTOUR INTERVAL 10 METERS