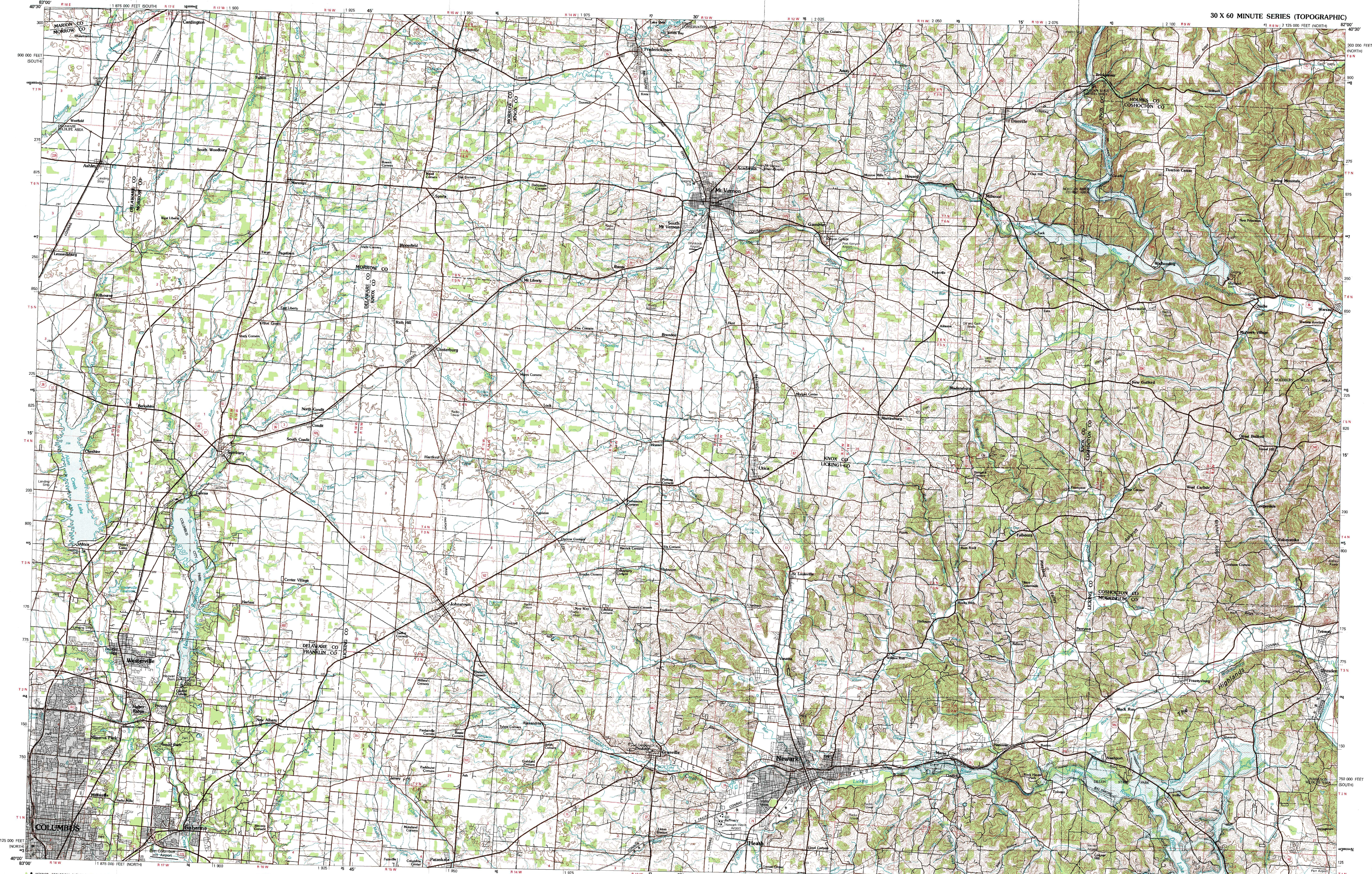
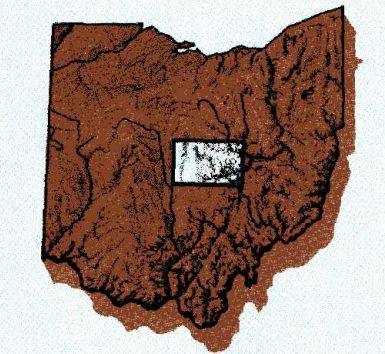


NEWARK, OHIO

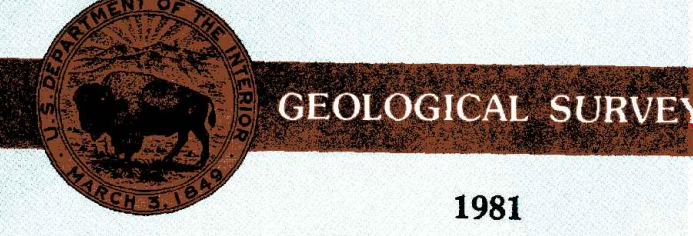
30 X 60 MINUTE SERIES (TOPOGRAPHIC)



1:100 000-scale metric topographic map of Newark OHIO



- 30 X 60 MINUTE QUADRANGLE SHOWING**
- Contours and elevations in meters
 - Highways, roads and other manmade structures
 - Water features
 - Woodland areas
 - Geographic names



1981

Produced by the United States Geological Survey
 Compiled from USGS 1:24 000-scale topographic maps dated 1961-1978. Planimetry revised from aerial photographs taken 1974, 1976 and other source data. Revised information not field checked. Map edited 1981.
 Projection and 10 000-meter grid, zone 17; Universal Transverse Mercator
 25 000-foot grid ticks based on Ohio coordinate system, north and south zones
 1927 North American Datum
 To place on the predicted North American Datum 1983 move the projection lines 3 meters south and 11 meters west
 There may be private inholdings within the boundaries of the National or State reservations shown on this map

CONTOUR INTERVAL 10 METERS
 NATIONAL GEODETIC VERTICAL DATUM OF 1929
 ELEVATIONS SHOWN TO THE NEAREST METER

THIS MAP COMPLIES WITH NATIONAL MAP ACCURACY STANDARDS

CONVERSION TABLE		DECLINATION DIAGRAM		ADJOINING MAPS			
Meters	Feet			1	2		
2	6 561.7			3	5		
4	13 123.4			4	6		
6	19 685.1			5	7		
8	26 246.8			6	8		
10	32 808.5			7			
To convert meters to feet multiply by 3.2808				UTM grid convergence (GM) and 1983 magnetic declination (MD) at center of map. Diagram is approximate.		1 Marion 2 Mansfield 3 Canton 4 Ballwin 5 Coshocton 6 Springfield 7 Lancaster 8 Seneca Lake	

FOR SALE BY U. S. GEOLOGICAL SURVEY
 RESTON, VIRGINIA 22092

Topographic Map Symbols

Primary highway, hard surface	
Secondary highway, hard surface	
Light duty road, principal street, hard or improved surface	
Other road or street, ball	
Road marker: intermediate, U. S. State	
Railroad: standard gage, narrow gage	
Bridge: overpass; underpass	
Tunnel: road; railroad	
Built up area, locality, elevation	
Airport, landing field; landing strip	
National boundary	
County boundary	
National or State reservation boundary	
Land grant boundary	
U. S. public land survey: range, township, section	
Ridge, township, section line; protected	
Power transmission line; pipeline	
Dam; dam with lock	
Cemetery; building	
Wellhead; water well; spring	
Mine shaft; adit or ore; mine, quarry, gravel pit	
Campground; picnic area; U. S. location wagonway	
Ruins; cliff dwelling	
Distorted surface: strip mine, lava, sand	
Contours: index; intermediate; supplementary	
Bathymetric contours: index; intermediate	
Stream; lake; perennial; intermittent	
Rapids, large and small; falls, large and small	
Area to be submerged; marsh, swamp	
Land subject to controlled inundation; wooded	
Sarab; mangrove	
Orchard; vineyard	

A pamphlet describing topographic maps is available on request