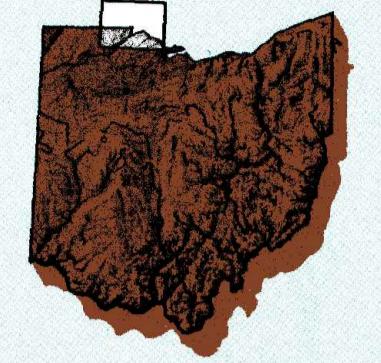


# Toledo

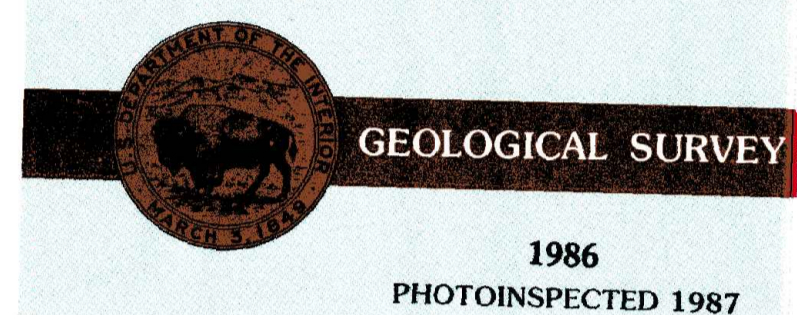
OHIO-MICHIGAN-ONTARIO

1:100 000-scale metric topographic map



30 X 60 MINUTE QUADRANGLE SHOWING

- Contours and elevations in meters
- Highways, roads and other manmade structures
- Water features
- Woodland areas
- Geographic names



Produced by the United States Geological Survey  
 Compiled from USGS 1:24 000-scale topographic maps dated 1960-1981. Planimetry revised from aerial photographs taken 1983 and other source data. Revised information not field checked. Map edited 1986.

Projection and 10 000-meter grid, zone 17, Universal Transverse Mercator  
 25 000-foot grid ticks based on Ohio coordinate system, north zone and Michigan coordinate system, south zone 1927 North American Datum  
 To place on the predicted North American Datum 1983, move the projection lines 1 meter south and 6 meters west

There may be private holdings within the boundaries of the National or State Reservations shown on this map.

Map photoinspected using 1987 photographs  
 No major culture or drainage changes found  
 CONTOUR INTERVAL: 5 METERS  
 NATIONAL GEODETIC VERTICAL DATUM OF 1929  
 ELEVATIONS SHOWN TO THE NEAREST METER

THIS MAP COMPLIES WITH NATIONAL MAP ACCURACY STANDARDS

CONVERSION TABLE		DECLINATION DIAGRAM		ADJOINING MAPS		
Meters	Feet	1	2	3	4	5
1	3.2808	1	2	3	4	5
2	6.5617	4	5	6	7	8
3	9.8425					
4	13.1234					
5	16.4042					
6	19.6850					
7	22.9659					
8	26.2467					
9	29.5275					
10	32.8084					

To convert meters to feet multiply by 3.2808  
 To convert feet to meters multiply by 0.3048

UTM grid convergence (Gauss-Krüger) at center of map Diagram is approximate

1	2	3
4	5	6
7	8	9

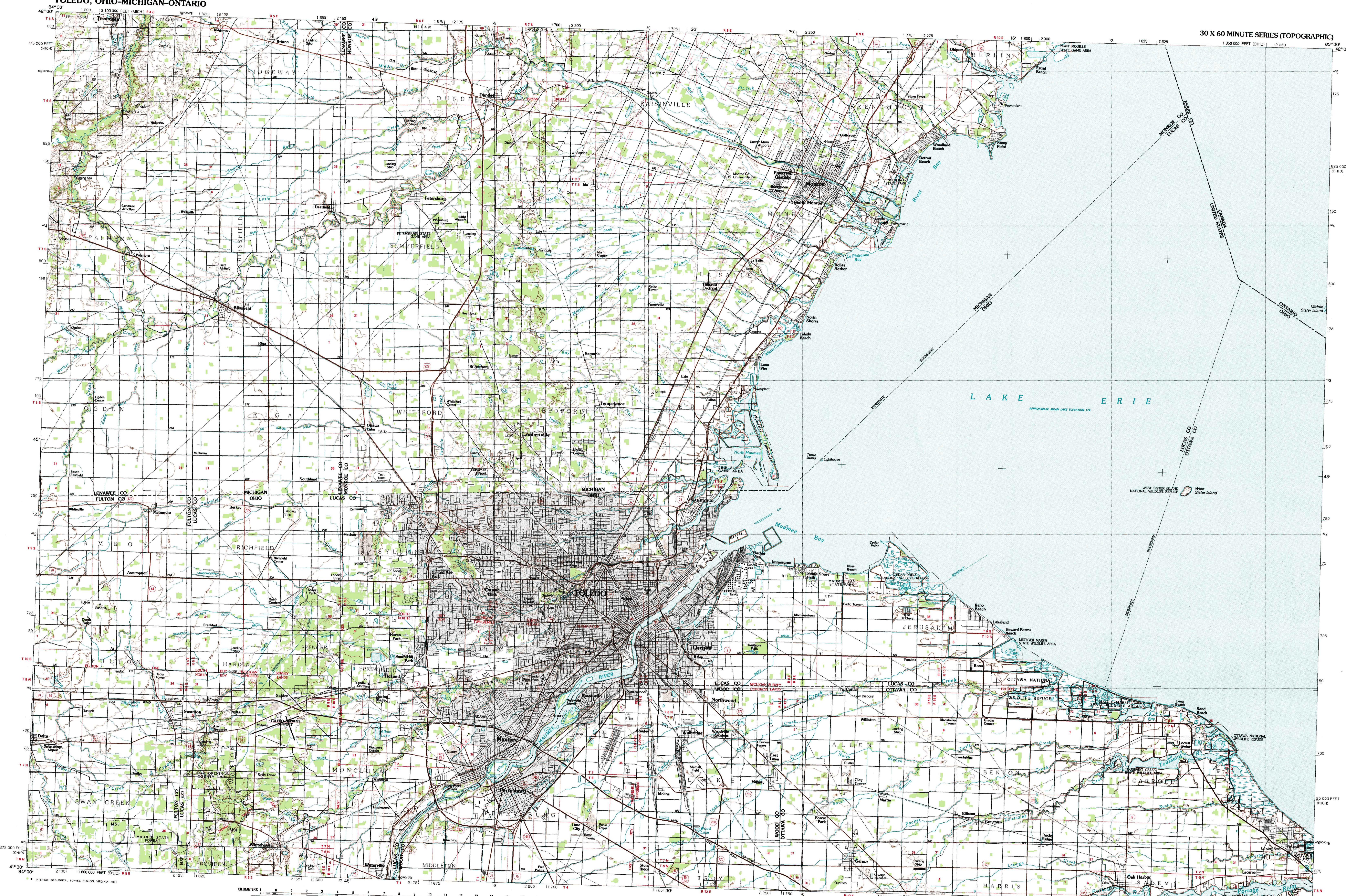
1 Jackson  
2 Denzil  
3 Lake St Clair South  
4 Adams  
5 Put-In-Bay  
6 Defiance  
7 Findlay  
8 Lima

FOR SALE BY U.S. GEOLOGICAL SURVEY  
DENVER, COLORADO 80225, OR RESTON, VIRGINIA 22092

## Topographic Map Symbols

- Primary highway, hard surface
- Secondary highway, hard surface
- Light duty road, principal street, hard or improved surface
- Other road or street, trail, hard or improved surface
- Four-mile marker, Interstate, U.S. State
- Railroad: standard gage, narrow gage
- Bridge: overpass, underpass
- Tunnel: road, railroad
- Built-up area, nearby, alteration
- Airport: landing field, landing strip
- National boundary
- State boundary
- County boundary
- National or State Reservation boundary
- Land grant boundary
- U.S. public lands survey: range, township, section
- Range, township, section line: protected
- Power transmission line: pipeline
- Dam: dam with lock
- Canal: building
- Widened, water well, spring
- Mine shaft: adit or cave, mine, quarry, gravel pit
- Campground, picnic area, U.S. location monument
- Ruins: cliff dwelling
- Disturbed surface: strip mine, lava, sand
- Contours: index, intermediate, supplementary
- Bathymetric contours: index, intermediate
- Stream: lake, perennial, intermittent
- Rapids, large and small; falls, large and small
- Area to be submerged: marsh, swamp
- Land subject to controlled inundation; woodland
- Scrub; mangrove
- Orchard; vineyard

A pamphlet describing topographic maps is available on request



SCALE 1:100 000  
 1 CENTIMETER ON THE MAP REPRESENTS 1 KILOMETER ON THE GROUND  
 CONTOUR INTERVAL 5 METERS

KILOMETERS 1 0 1 2 3 4 5 6 7 8 9 10 11 12 13 14 15 16 17 18 19 20  
 MILES 1 0 1 2 3 4 5 6 7 8 9 10 11 12 13 14 15 16 17 18 19 20